

Introduce

Optical fiber patchcord(fiber jumper)with ISO9001 and 14001 certification ,ROHS. sometimes called a fiber optic patch cord is a length of fiber cabling fitted with LC, SC, FC,MTRJ or ST fiber connectors at each end.The LC, a smaller form factor fiber optic connector, is most commonly used. Fiber jumpers also come in hybrid varieties with one type of connector on one end and another type of connector on the other. Jumpers are used in the same manner as patch cords, to connect end devices or network hardware to the structured cabling system.

Features

- High dense spaces
- Ceramic ferrules connectors
- Low insertion loss,high return loss
- Half the size of standard connector
- Excellent mechanical endurance
- High credibility and stability
- Good in repeatability and exchangeability
- 100% Insertion,Return Loss, End face and Interference inspection

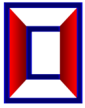


Applications

- Telecommunication
- CATV,FTTH,LAN
- Fiber optic sensors
- Optical transmission system
- Test equipment

Technical parameters

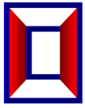
Parameter	FC,SC,LC			ST,MU		MTRJ	
	SM		MM	SM	MM	SM	MM
	UPC	APC	UPC	UPC	UPC	UPC	UPC
Operating Wavelength (nm)	1310, 1550		850 , 1300	1310, 1550	850, 1300	1310, 1550	850, 1300
Insertion Loss (dB)	≤0.2	≤0.3	≤0.2	≤0.2	≤0.2	≤0.2	≤0.2
Return Loss (dB)	≥50	≥60	≥35	≥50	≥35	≥50	≥35



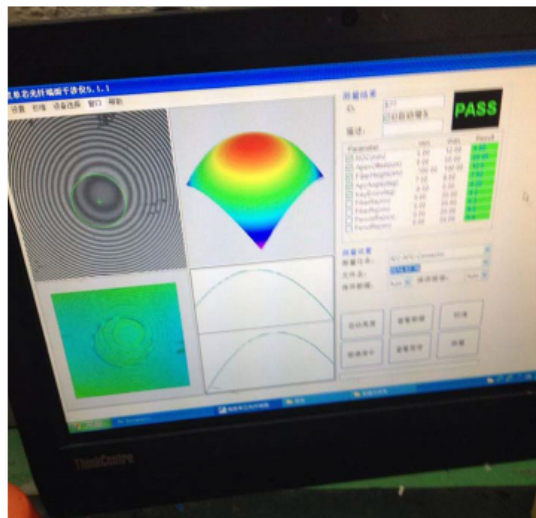
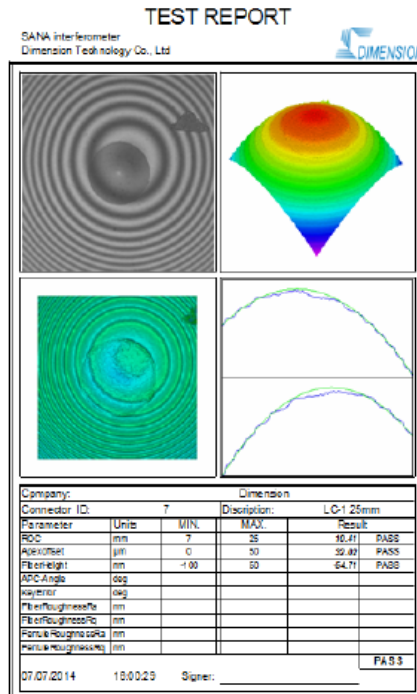
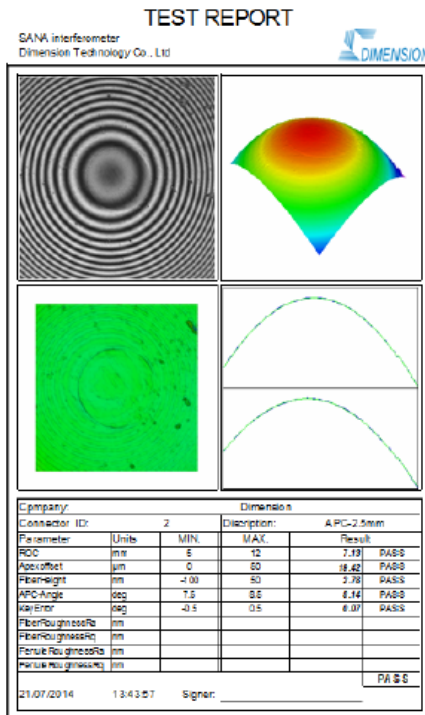
Repeatability (dB)	≤ 0.1
Interchangeability (dB)	≤ 0.2
Plug times (times)	≥ 1000
Tensile Strength (N)	≥ 100
Durability (dB)	≤ 0.2
Operating temperature (°C)	-45~+75
Storage temperature (°C)	-45~+85

Note : 1、Specifications may change without notice.2、Above specification are for device without connector.

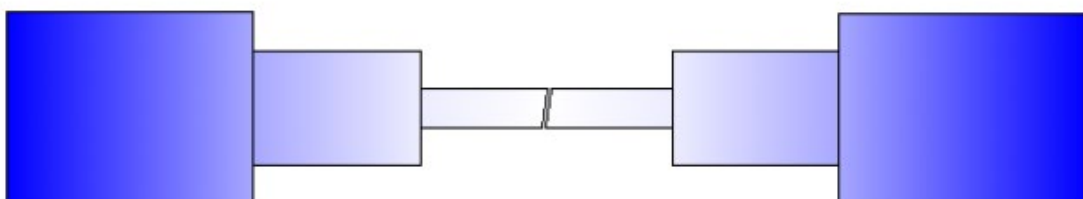
Mode number	Single-Mode	Multi-Mode
Length	(10.50 \pm 0.05)mm	(10.50 \pm 0.01)mm
Outer-diameter	(2.4990 \pm 0.0005)mm	(2.4990 \pm 0.0001)mm
Inner-diameter	(0.125 \pm 0.001/-0)mm	(0.126-0.129)mm
Concentricity	≤ 1.0	≤ 4.0

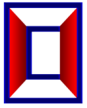


3D Interference Test

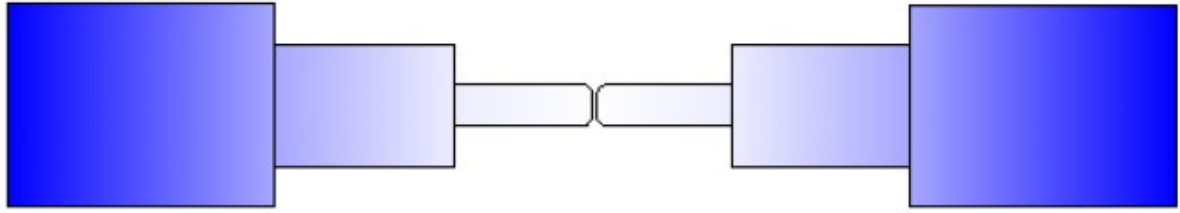


APC--Angled Physical Contact,endface is curved,with 8 degree





UPC--Ultra Physical Contact with an extended polishing for a better surface finish



Connectors&Kits(customer-designde color for boots and dust caps)



Remark:1、Housing material—PBT,TPE,TT,Metal material2、Housing color—Blue(SM/UPC),Green(SM/APC),Beige(MM),Aqua

